



Folly Road Crossing

TOTAL VISITORS
169.8K
(12 MONTHS)

Folly Road Crossing has recently undergone an impressive expansion and renovation, making it a must-visit destination for shoppers. As the nearest shopping center to Folly Beach resort area and one of the liveliest hubs on James Island, Folly Road Crossing attracts a constant stream of visitors.

OVERVIEW

1985 Folly Road
Charleston, SC 29412

For Lease
Type: Retail
Total SF: 53,994

RETAILERS INCLUDE



LEASING ASSOCIATE



Kevin Conway
Sr. Leasing Manager
(757) 618-5932
kconway@whlr.us

DEMOGRAPHICS	3 MILES	5 MILES	10 MILES
POPULATION	18,239	39,399	154,556
HOUSEHOLDS	7,852	15,751	63,199
AVG. HH INCOME (\$)	\$87,820	\$100,196	\$100,903
MEDIAN AGE	43	41	37

Folly Road Crossing

1985 Folly Road
Charleston, SC 29412

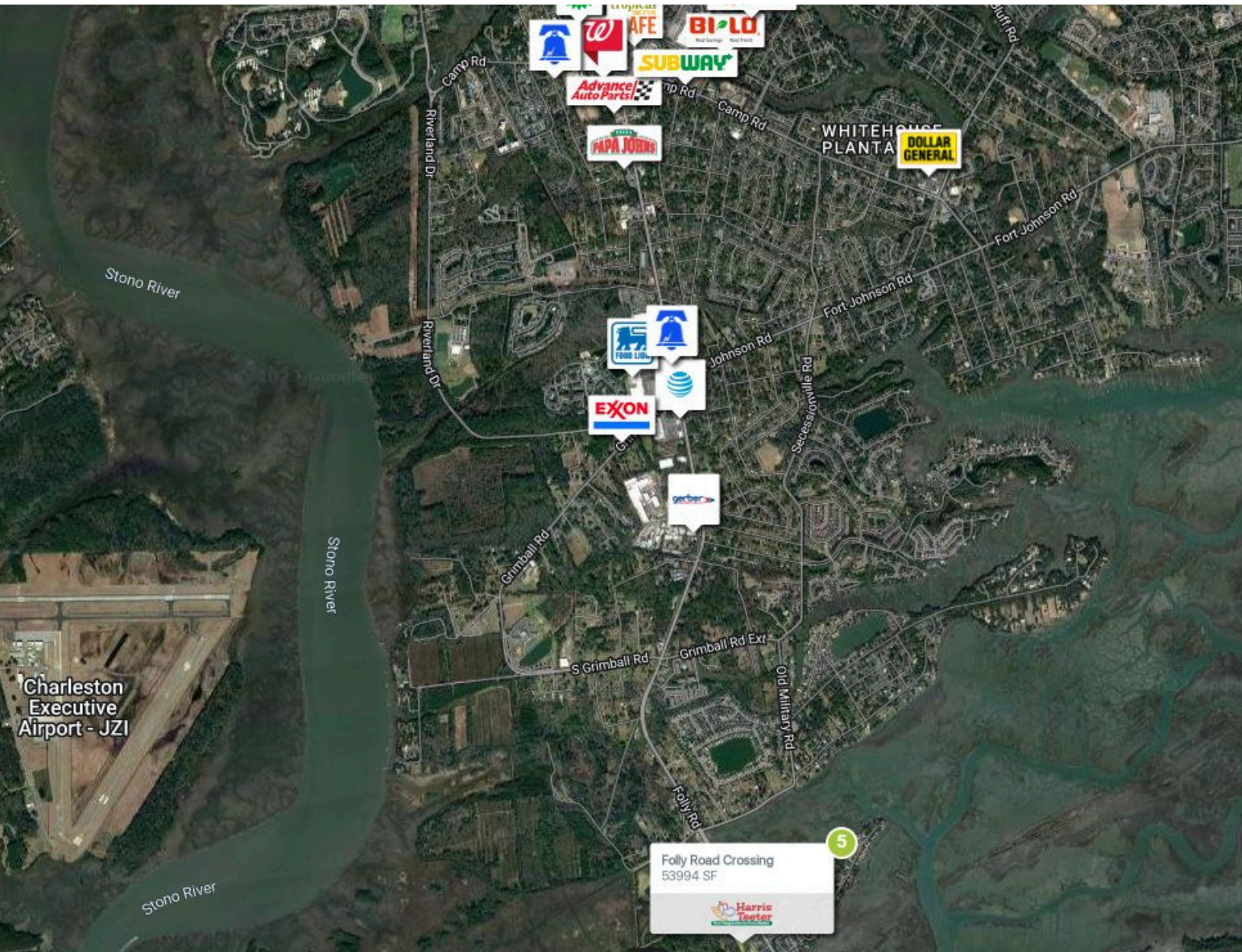


SUITE	TENANTS	S.F.
Anchor	Harris Teeter	39,946
A	Pan Garden	1,200
B	Folly Nails	1,200
C	Lazy Dog Liquors	1,200
FS	Harris Teeter Fuel Station	4,248

SUITE	TENANTS	S.F.
D	AVAILABLE	1,240
E	AVAILABLE	1,240
F	AVAILABLE	1,240
G	AVAILABLE	1,240
H	AVAILABLE	1,240

Folly Road Crossing

1985 Folly Road
Charleston, SC 29412



AADT: 12,307 (Folly Road Route 171)

Avg. Hourly Traffic: 513 (Folly Road Route 171)

DISCLAIMER

The information contained herein has been obtained from sources we believe to be reliable; however, we have not investigated nor verified any information and make no guarantee, warranty or representation to the accuracy or completeness of information. By accepting this Marketing Brochure, you agree to release Wheeler Real Estate Company and WHLR and hold it harmless from any kind of claim, cost, expense, or liability arising out of your investigation and/or lease of this property. This Marketing Brochure and offering is subject to correction or errors and omissions, change of price, prior to sale/lease or withdrawal from the market, without notice.

WHLR

WHEELER REAL ESTATE COMPANY
a subsidiary of Wheeler Real Estate Investment Trust

2529 VIRGINIA BEACH BLVD., VIRGINIA BEACH, VA 23452 | P: (757) 627-9088 | WHLR.US