



Georgetown Shopping Center

TOTAL VISITORS
28.5K
(12 MONTHS)

OVERVIEW

1620 Highmarket Street
Georgetown, SC 29440

For Lease
Type: Retail
Total SF: 29,572

This bustling shopping center, anchored by Piggy Wiggly, is conveniently situated at the booming intersection of US Hwy. 17A & Lynch St. It benefits from a constant flow of customers, including local shoppers and commuters traveling between Charleston & Myrtle Beach.

RETAILERS INCLUDE



LEASING ASSOCIATE

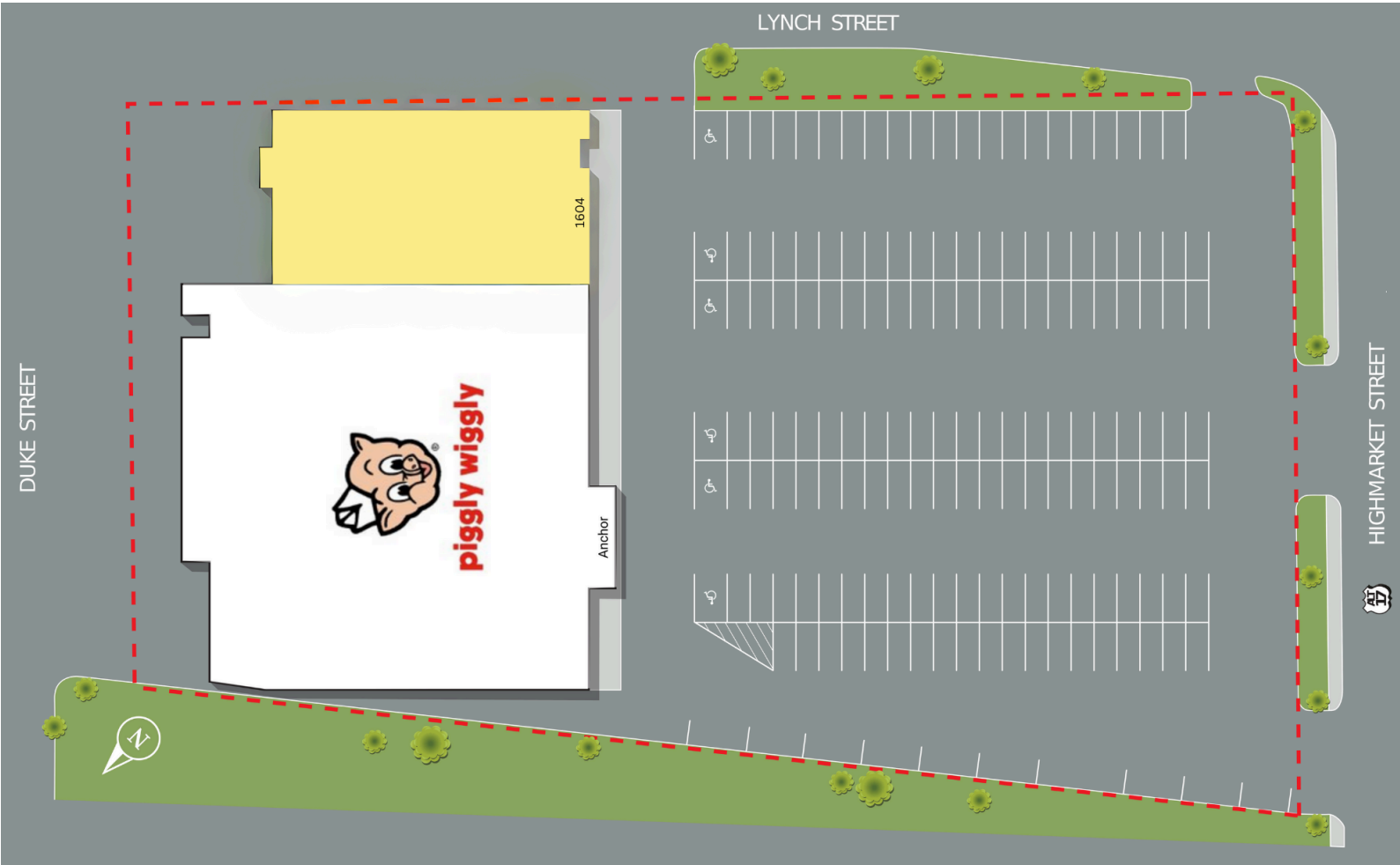


Kevin Conway
Sr. Leasing Manager
(757) 618-5932
kconway@whlr.us

DEMOGRAPHICS	3 MILES	5 MILES	10 MILES
POPULATION	12,177	16,230	28,386
HOUSEHOLDS	5,129	6,728	11,751
AVG. HH INCOME (\$)	\$51,083	\$53,397	\$71,929
MEDIAN AGE	38	41	47

Georgetown Shopping Center

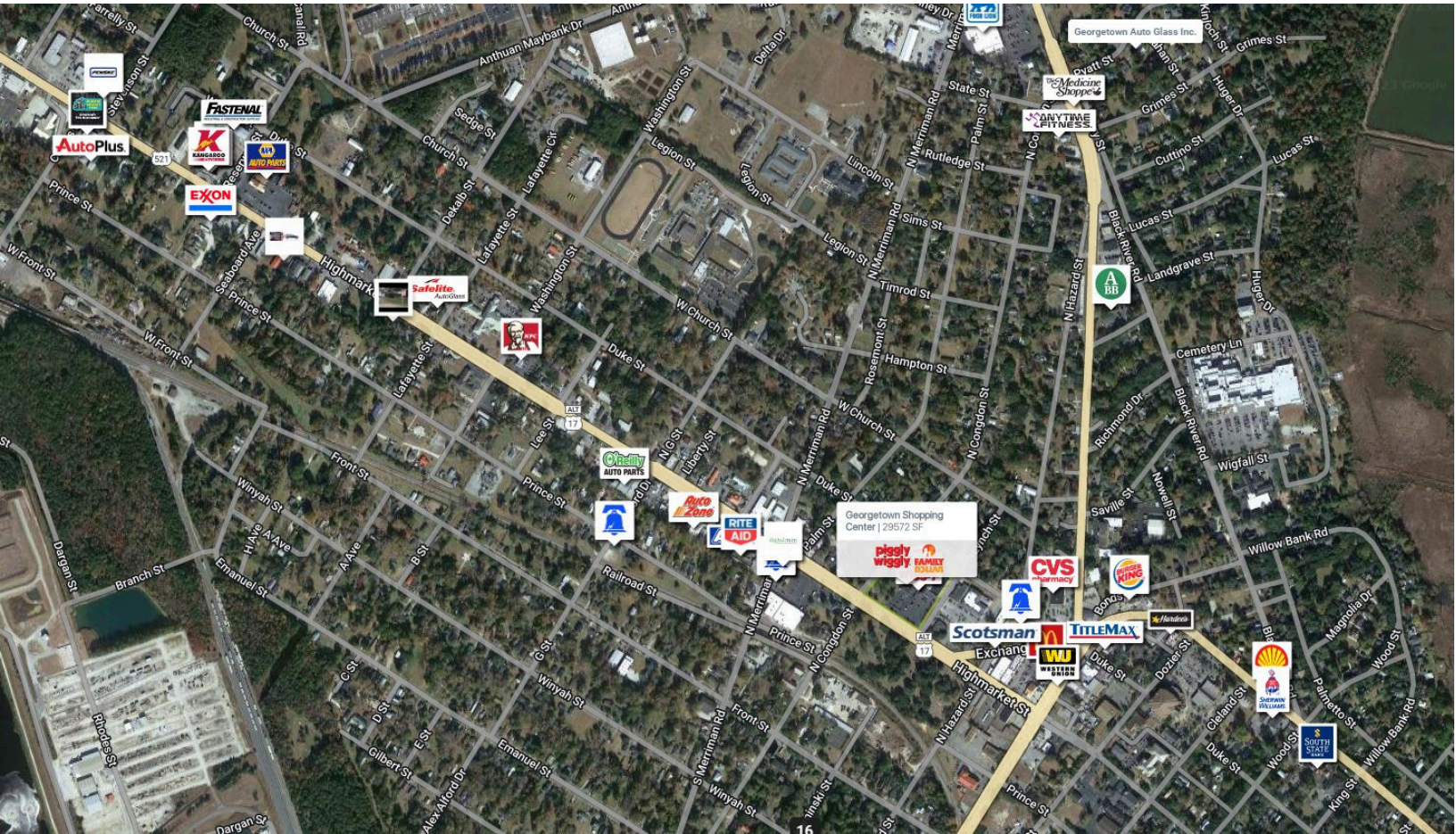
1620 Highmarket Street
Georgetown, SC 29440



SUITE	TENANTS	S.F.
Anchor	Piggly Wiggly	22,032
1604	AVAILABLE	7,540

Georgetown Shopping Center

1620 Highmarket Street
Georgetown, SC 29440



ADT: 16,708 (Highmarket Street)

Avg. Hourly Traffic: 1,170 (Highmarket Street)

DISCLAIMER

The information contained herein has been obtained from sources we believe to be reliable; however, we have not investigated nor verified any information and make no guarantee, warranty or representation to the accuracy or completeness of information. By accepting this Marketing Brochure, you agree to release Wheeler Real Estate Company and WHLR and hold it harmless from any kind of claim, cost, expense, or liability arising out of your investigation and/or lease of this property. This Marketing Brochure and offering is subject to correction or errors and omissions, change of price, prior to sale/lease or withdrawal from the market, without notice.

WHLR

WHEELER REAL ESTATE COMPANY
a subsidiary of Wheeler Real Estate Investment Trust

2529 VIRGINIA BEACH BLVD., VIRGINIA BEACH, VA 23452 | P: (757) 627-9088 | WHLR.US