



Lake Greenwood Crossing

TOTAL VISITORS
74.4K
(12 MONTHS)

OVERVIEW

3353 Hwy 72 221 East
Greenwood, SC 29649

For Lease
Type: Retail
Total SF: 43,618

Situated at the bustling intersection of Highway 72/221 and SC Hwy 46, the center experiences a constant stream of traffic throughout the day. As Lake Greenwood's surrounding area undergoes significant population growth, the center's trade zone has transformed from rural to suburban. With the highly successful KJ's Market serving as the anchor, visitors are delighted to find exactly what they need at Lake Greenwood.

RETAILERS INCLUDE



LEASING ASSOCIATE

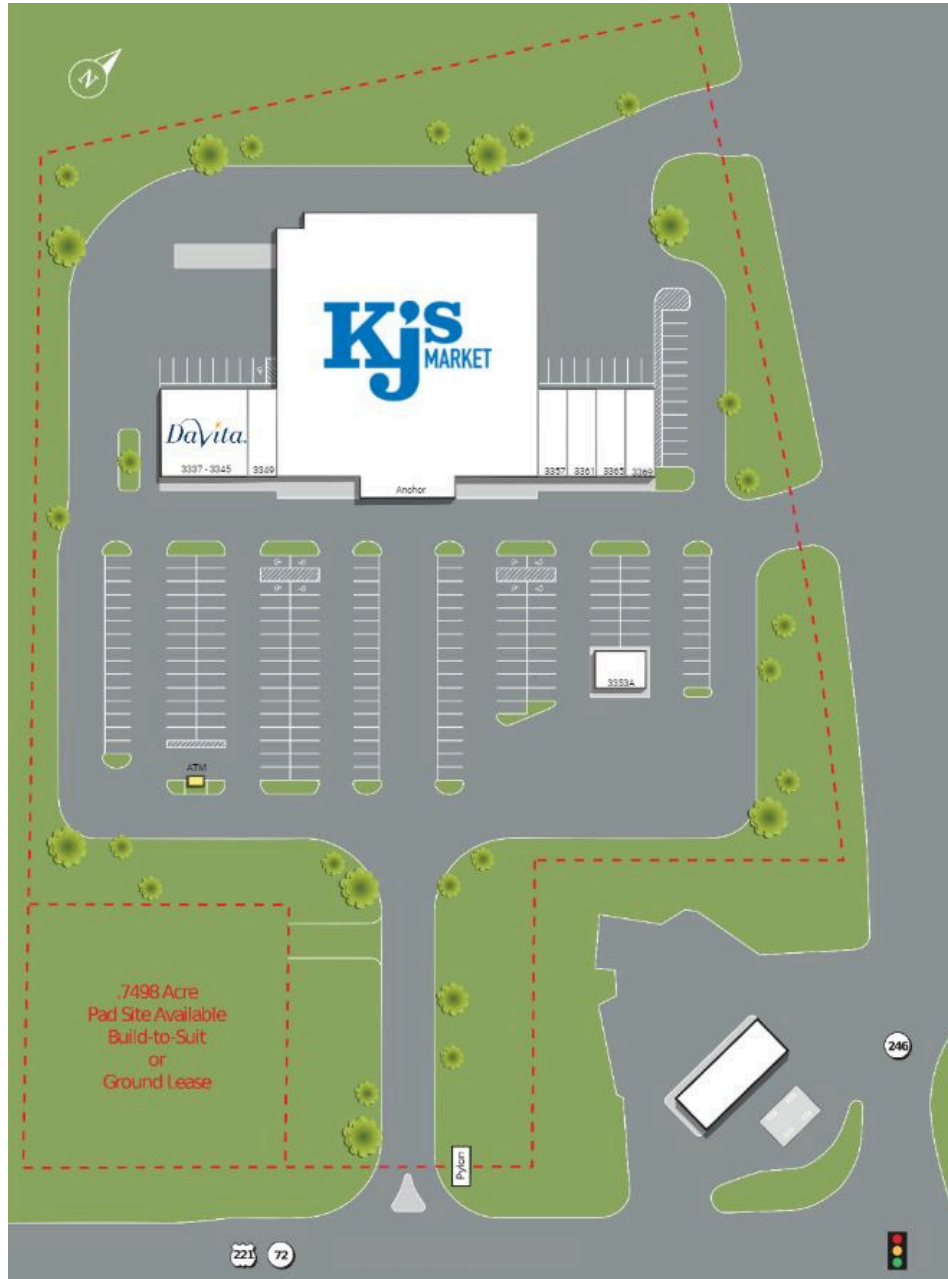


Raymond Hicks
Sr. Leasing Manager
(757) 434-1168
rhicks@whlr.us

DEMOGRAPHICS	3 MILES	5 MILES	10 MILES
POPULATION	4,774	19,478	38,293
HOUSEHOLDS	1,995	7,253	15,507
AVG. HH INCOME (\$)	\$56,608	\$64,528	\$60,155
MEDIAN AGE	40	35	37

Lake Greenwood

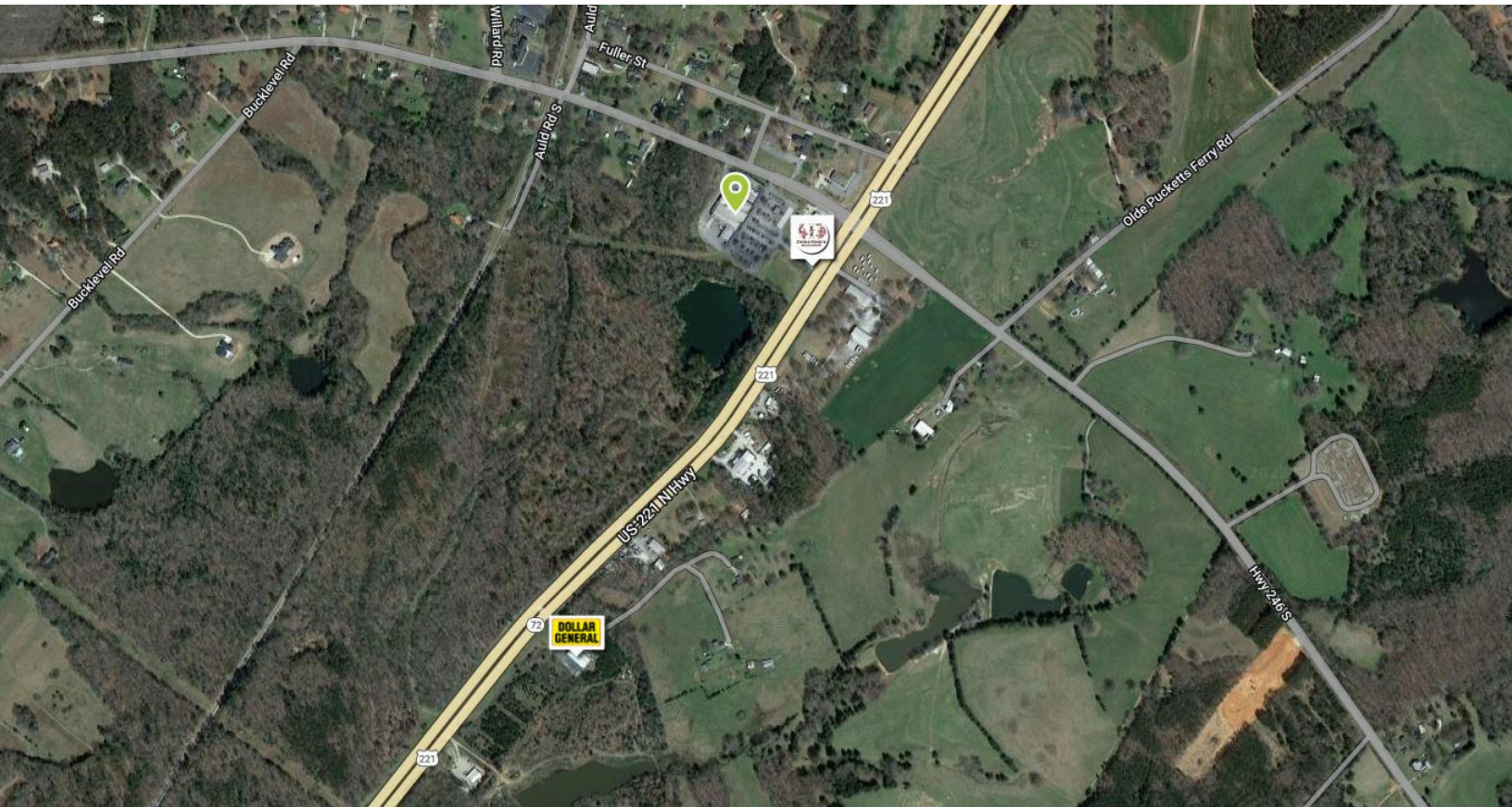
3353 Hwy 72 221 East
Greenwood, SC 29649



SUITE	TENANTS	S.F.
3337 - 3345	DaVita Inc.	3,600
3349	Sam Tobacco & Vape	1,200
3353	KJ's Market	33,218
3353A	Barbecue To Go	800
3357	Lakeside ABC	1,200
3361	China King	1,200
3365	Wiley Real Estate	1,200
3369	Boun's Hibachi	1,200
ATM	AVAILABLE - ATM Pad	0

Lake Greenwood

3353 Hwy 72 221 East
Greenwood, SC 29649



AADT: 12,605 (Hwy 72)

Avg. Hourly Traffic: 526 (Hwy 526)

DISCLAIMER

The information contained herein has been obtained from sources we believe to be reliable; however, we have not investigated nor verified any information and make no guarantee, warranty or representation to the accuracy or completeness of information. By accepting this Marketing Brochure, you agree to release Wheeler Real Estate Company and WHLR and hold it harmless from any kind of claim, cost, expense, or liability arising out of your investigation and/or lease of this property. This Marketing Brochure and offering is subject to correction or errors and omissions, change of price, prior to sale/lease or withdrawal from the market, without notice.