



Parkway Plaza

TOTAL VISITORS
93.9K
(12 MONTHS)

Strategically situated along Golden Isles Parkway and conveniently located just off I-95, Parkway Plaza is a prime destination just a short drive away from the year-round attractions of St. Simons Island, Sea Island, and Jekyll Island. These popular destinations attract a combined total of over 1.5 million visitors annually. Newly anchored by Aldi, you will be joining a lineup of beloved local retailers such as Subway, LA Nails, Chinatown, and Lucky Star Tobacco & Vape.

OVERVIEW

303 - 363 Venture Drive
Brunswick, GA 31525

For Lease

Type: Retail

Total SF: 52,365

RETAILERS INCLUDE



LEASING ASSOCIATE



Denbeigh Marchant
VP of Leasing
(757) 636-1301
denbeigh@whlr.us

DEMOGRAPHICS

	3 MILES	5 MILES	10 MILES
POPULATION	25,492	42,887	81,353
HOUSEHOLDS	9,821	16,573	32,460
AVG. HH INCOME (\$)	\$64,700	\$63,690	\$80,652
MEDIAN AGE	36	37	41

Parkway Plaza

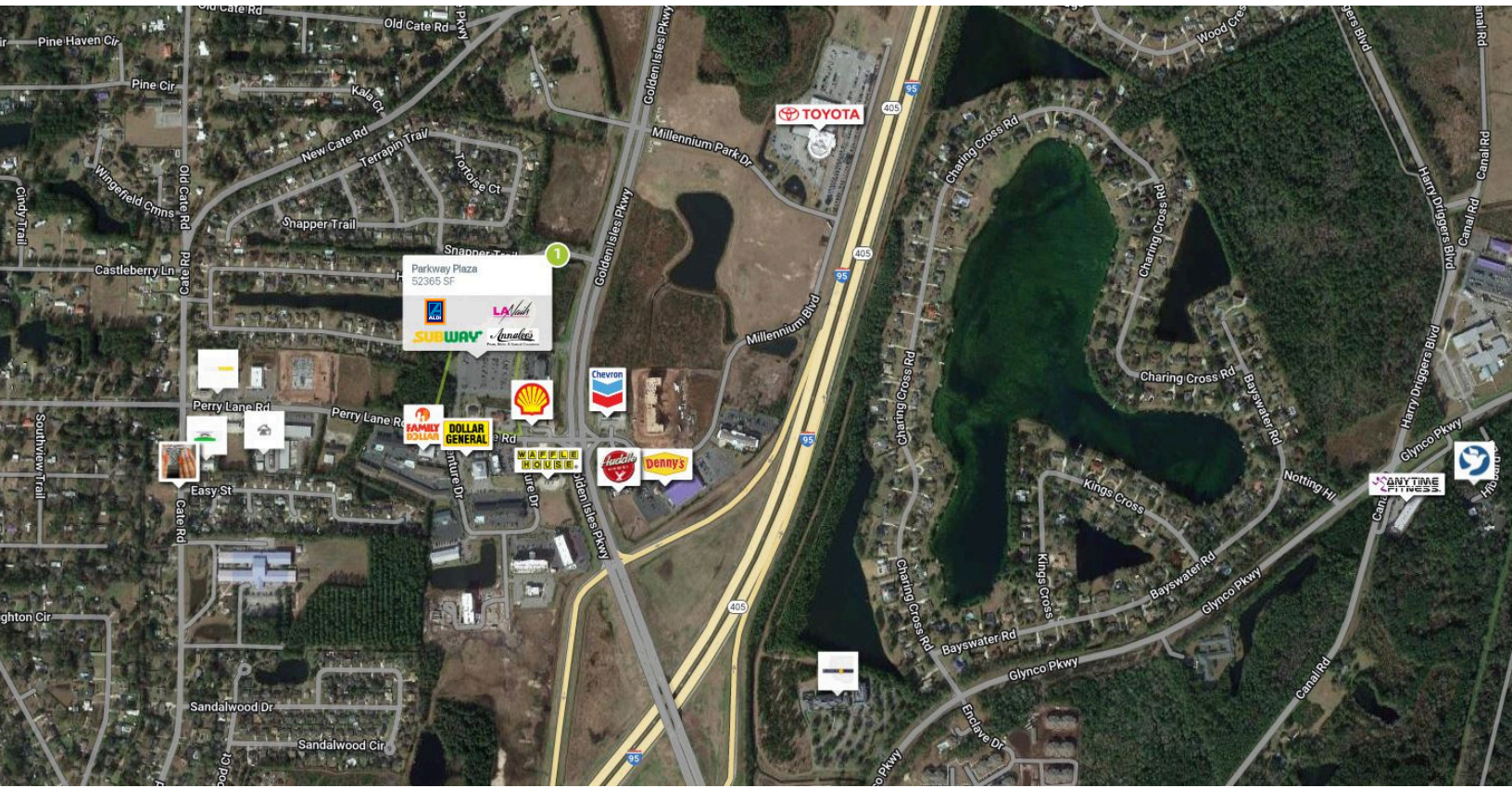
303 - 363 Venture Drive
Brunswick, GA 31525



SUITE	TENANTS	S.F.
A2	China Panda	1,600
A3	LA Nails	1,600
A4	AVAILABLE	7,980
A5-B	Aldi	37,985
A6	Lucky Star Tobacco & Vape	1,600
A7	Subway	1,600

Parkway Plaza

303 - 363 Venture Drive
Brunswick, GA 31525



AADT: 10,681 (Golden Isles Pkwy.)

Avg. Hourly Traffic: 688 (Golden Isles Pkwy.)

DISCLAIMER

The information contained herein has been obtained from sources we believe to be reliable; however, we have not investigated nor verified any information and make no guarantee, warranty or representation to the accuracy or completeness of information. By accepting this Marketing Brochure, you agree to release Wheeler Real Estate Company and WHLR and hold it harmless from any kind of claim, cost, expense, or liability arising out of your investigation and/or lease of this property. This Marketing Brochure and offering is subject to correction or errors and omissions, change of price, prior to sale/lease or withdrawal from the market, without notice.

WHLR

WHEELER REAL ESTATE COMPANY
a subsidiary of Wheeler Real Estate Investment Trust

2529 VIRGINIA BEACH BLVD., VIRGINIA BEACH, VA 23452 | P: (757) 627-9088 | WHLR.US