



Twin City Crossing

TOTAL VISITORS
54.2K
(12 MONTHS)

Twin City Crossing has proudly boasted a 100% occupancy rate since 2004. With KJ's Market as its prominent anchor, this retail powerhouse is accompanied by popular national and local establishments such as Subway, China 1, Ci-Ci's Nails, and Sam's Tobacco. Continuously drawing more visitors, this center constantly boosts its daily foot traffic.

OVERVIEW

249 W. Columbia Avenue
Batesburg-Leesville, SC 29006

For Lease
Type: Retail
Total SF: 47,680

RETAILERS INCLUDE



LEASING ASSOCIATE



Kevin Conway
Sr. Leasing Manager
(757) 618-5932
kconway@whlr.us

DEMOGRAPHICS	3 MILES	5 MILES	10 MILES
POPULATION	8,482	10,334	27,035
HOUSEHOLDS	3,037	3,702	10,090
AVG. HH INCOME (\$)	\$59,225	\$59,930	\$60,738
MEDIAN AGE	38	38	41

Twin City Crossing

249 W. Columbia Avenue
Batesburg-Leesville, SC 29006



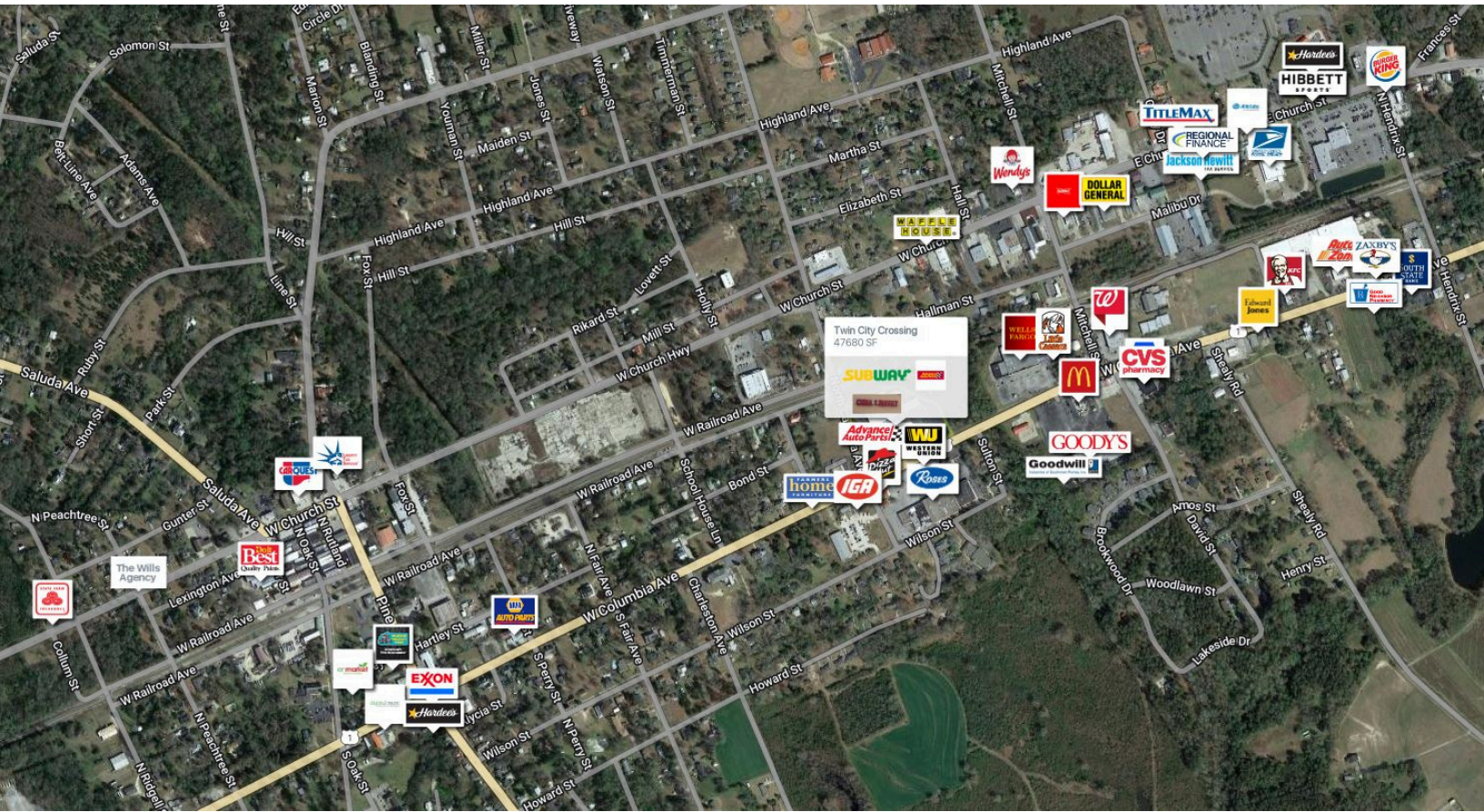
SUITE	TENANTS	S.F.
10	KJ's Market	41,980
20	Ci-Ci's Nails	1,200
30	China 1	1,500
40	Sam's Tobacco	1,200
50	Subway	1,800

Phase II Development

+/- 9,742 SF of additional inline shop space
Prime outparcel available for ground lease/build to suit

Twin City Crossing

249 W. Columbia Avenue
Batesburg-Leesville, SC 29006



AADT: 10,456 (W. Columbia Avenue)
Avg. Hourly Traffic: 435 (W. Columbia Avenue)

DISCLAIMER

The information contained herein has been obtained from sources we believe to be reliable; however, we have not investigated nor verified any information and make no guarantee, warranty or representation to the accuracy or completeness of information. By accepting this Marketing Brochure, you agree to release Wheeler Real Estate Company and WHLR and hold it harmless from any kind of claim, cost, expense, or liability arising out of your investigation and/or lease of this property. This Marketing Brochure and offering is subject to correction or errors and omissions, change of price, prior to sale/lease or withdrawal from the market, without notice.